

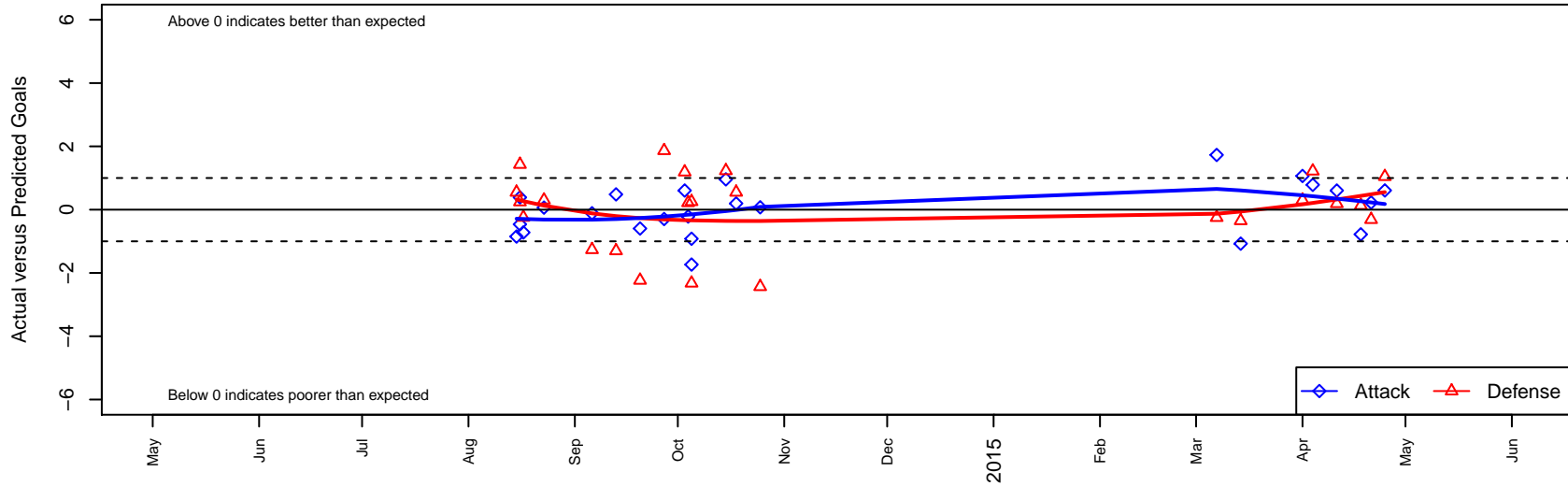
# Meridian United FC Red G01

, ID  
 G01 total strength=841  
 attack=1.55 defense=0.86  
 fall league = Idaho D3 A U13  
 spr league = Spr Idaho D3 B U13

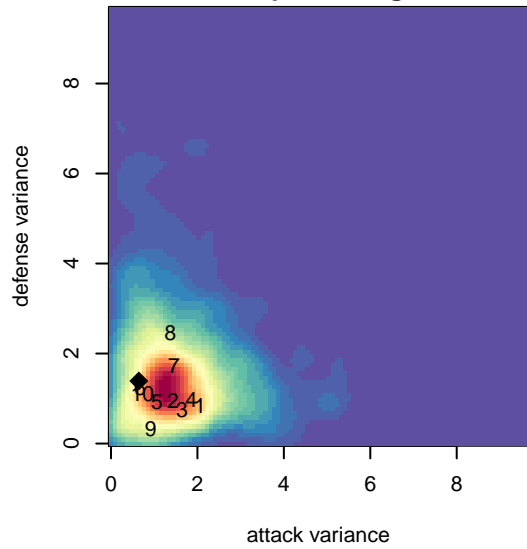
alt names used:  
 Meridian United FC U12  
 Meridian United FC U12  
 Meridian United FC U12  
 MERIDIAN UNITED RED

Venues played:  
 2014 Mt Hood Challenge U13  
 2014 Idaho D3 A U13  
 2014 GEM State Challenge U13G Silver East L  
 2014 Spr Idaho D3 B U13

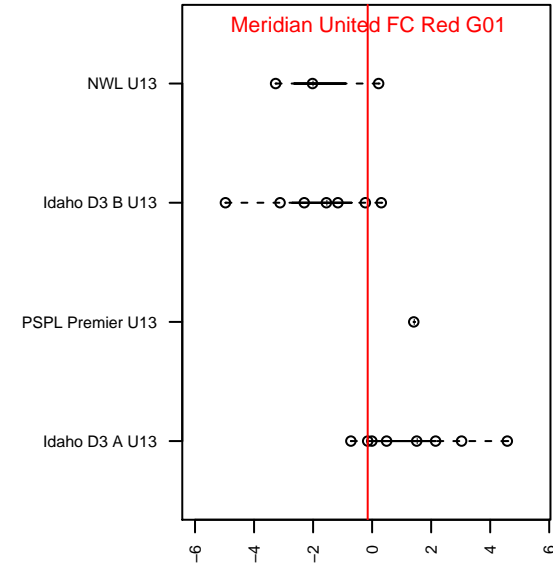
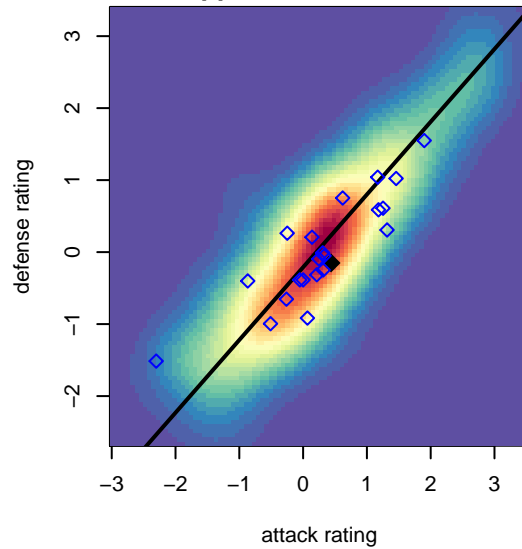
**Meridian United FC Red G01**  
 Dots are actual minus expected GF (blue circles) and GA (red triangles).  
 Blue line is smoothed change in attack strength. Red is smoothed change in defense strength.



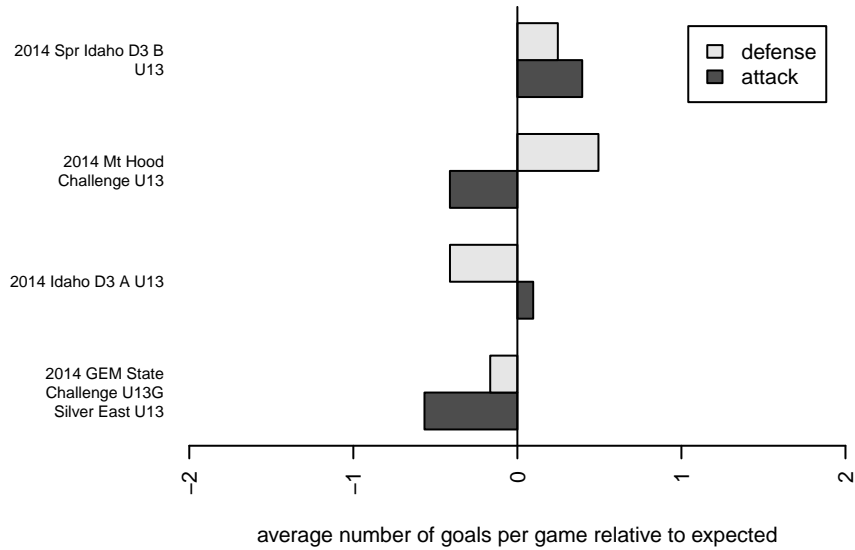
**attack and defense variance (black dot)  
relative to other teams  
and top 10 in region**



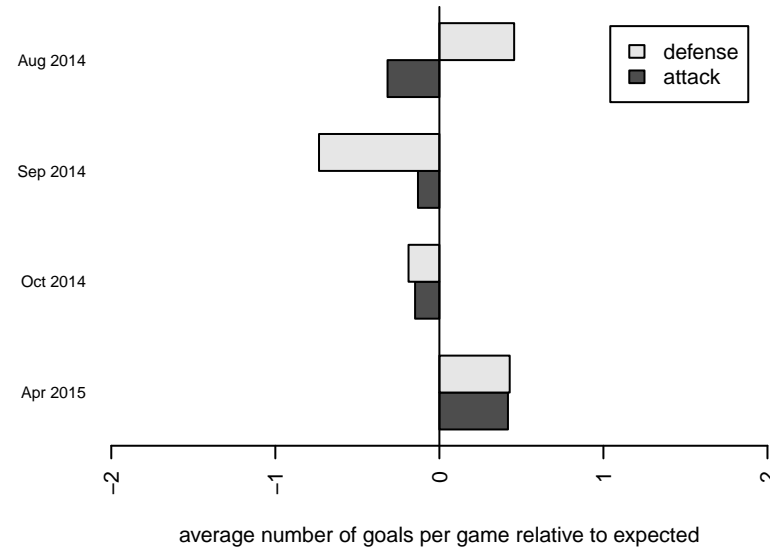
**attack and defense rating  
relative to others at age  
and all opponents in last 13 months**



**Performance relative to 13 month average**



**Performance relative to 13 month average**



date	home		away		venue	pred.home	pred.away
2015-04-25	Idaho Arsenal United Cheetos G01	0	Meridian United FC Red G01	3	2014 Spr Idaho D3 B U13	1.04	2.39
2015-04-21	Idaho Crossfire Inferno G01	2	Meridian United FC Red G01	2	2014 Spr Idaho D3 B U13	1.69	1.77
2015-04-18	Meridian United FC Red G01	6	Sawtooth United FC G01	0	2014 Spr Idaho D3 B U13	6.78	0.13
2015-04-11	Meridian United FC Red G01	3	Real Middleton Roma G01	1	2014 Spr Idaho D3 B U13	2.40	1.19
2015-04-04	Idaho Rush Azul G01	0	Meridian United FC Red G01	4	2014 Spr Idaho D3 B U13	1.22	3.22
2015-04-01	Meridian United FC Red G01	3	Boise Nationals SC Blue G01	1	2014 Spr Idaho D3 B U13	1.94	1.30
2015-03-14	Nationals West White G01	1	Meridian United FC Red G01	4	2014 Spr Idaho D3 B U13	0.65	5.07
2015-03-07	Meridian United FC Red G01	3	Idaho Rush Nero G01	2	2014 Spr Idaho D3 B U13	1.27	1.75
2014-10-25	FC Nova Red G01	7	Meridian United FC Red G01	1	2014 Idaho D3 A U13	4.57	0.93
2014-10-18	Meridian United FC Red G01	1	Indie Chicas G01	2	2014 Idaho D3 A U13	0.80	2.55
2014-10-15	Boise Nationals SC Premier G01	3	Meridian United FC Red G01	2	2014 Idaho D3 A U13	4.23	1.04
2014-10-05	Meridian United FC Red G01	0	Jackson Hole United G01	1	2014 GEM State Challenge U13G Silver Eas	0.92	1.25
2014-10-05	Idaho Rush Blue G02	4	Meridian United FC Red G01	0	2014 GEM State Challenge U13G Silver Eas	1.68	1.73
2014-10-04	Meridian United FC Red G01	3	Idaho Rush Azul G01	1	2014 GEM State Challenge U13G Silver Eas	3.22	1.22
2014-10-03	Meridian United FC Red G01	3	Real Middleton Roma G01	0	2014 GEM State Challenge U13G Silver Eas	2.40	1.19
2014-09-27	Meridian United FC Red G01	0	FC Nova Pink G01	6	2014 Idaho D3 A U13	0.30	7.86
2014-09-20	Meridian United FC Red G01	1	Nationals West Blue G01	4	2014 Idaho D3 A U13	1.60	1.77
2014-09-13	Idaho Rush Premier G01	6	Meridian United FC Red G01	1	2014 Idaho D3 A U13	4.70	0.52
2014-09-06	Meridian United FC Red G01	1	FC Nova White G01	3	2014 Idaho D3 A U13	1.11	1.74
2014-08-23	Meridian United FC Red G01	2	Boise Nationals SC Blue G01	1	2014 Idaho D3 A U13	1.94	1.30
2014-08-17	Meridian United FC Red G01	0	Three Rivers SC Black RCL G01	4	2014 Mt Hood Challenge U13	0.72	3.76
2014-08-16	Eastside Timbers Black G01	0	Meridian United FC Red G01	2	2014 Mt Hood Challenge U13	1.43	1.61
2014-08-16	Meridian United FC Red G01	0	Rogue Valley Timbers Red G01	5	2014 Mt Hood Challenge U13	0.46	5.24
2014-08-15	BSC Portland Gold-Tiempo G01	0	Meridian United FC Red G01	1	2014 Mt Hood Challenge U13	0.55	1.85